

SOFEA

LUXALTO
OUTDOOR



REVATI



The sofa's back and decorative cushions are filled with synthetic fiber and covered with water-resistant fabric for both aesthetics and functionality.

REVATI sofa is designed with a main structure crafted from premium stainless steel AISI 304 or 316, known for its durability and corrosion resistance. The addition of bamboo slats underneath the seats not only provides a stylish contrast but also ensures sturdiness and support. To maintain the sofa's integrity, a water drainage system is integrated to prevent water accumulation and prolong its lifespan.

For comfort and practicality, the padding consists of polyurethane with a first covering in waterproof protective fabric, offering a plush seating experience. The seats combine polyurethane and synthetic fiber, with the first layer covered in water-resistant fabric and equipped with drainage mesh for added protection against moisture.

A standout feature of this design is the fully removable cover, facilitating easy cleaning and maintenance to keep the sofa looking fresh and inviting for years to come.



LUXALTO
OUTDOOR



REVATI

-The main structure of the furniture is constructed using high-quality stainless steel tubes, specifically AISI 304 or 316, known for their exceptional strength and corrosion resistance. Complementing the robust steel frame, bamboo slats are incorporated into the design, adding a touch of natural elegance and warmth. This combination of durable stainless steel and organic bamboo creates a harmonious blend of modern sophistication and timeless beauty, making the furniture both sturdy and stylish for any living space.

- Seat, back, and armrest cushions are designed for maximum comfort and durability, featuring a removable cover made of polyester fiber and a stress-resistant polyurethane insert. These cushions also include a fixed cover in waterproof polyester, ensuring protection against the elements. The upholstery for the seat, back, and armrest cushions is fully removable



CHARA



The back and decorative cushions are filled with synthetic fiber and enveloped in water-resistant fabric, offering both style and practicality.

CHARA sofa features a main structure crafted from sleek stainless steel AISI 304-316, adding a touch of modern elegance to any space. Underneath the seats, solid bamboo panel provide both support and a unique design element. A well-thought-out water drainage system ensures that moisture is efficiently managed, enhancing the sofa's durability.

For comfort and longevity, the padding is made of polyurethane and covered with a waterproof protective fabric as the first layer. The seats combine polyurethane and synthetic fiber, with the first layer covered in water-resistant fabric and a drainage mesh incorporated for added protection against moisture.

Notably, the sofa comes with a fully removable cover, making maintenance and cleaning a breeze. This feature ensures that the sofa remains in top condition, ready to provide comfort and style for years to come.



LUXALTO
OUTDOOR



CHARA

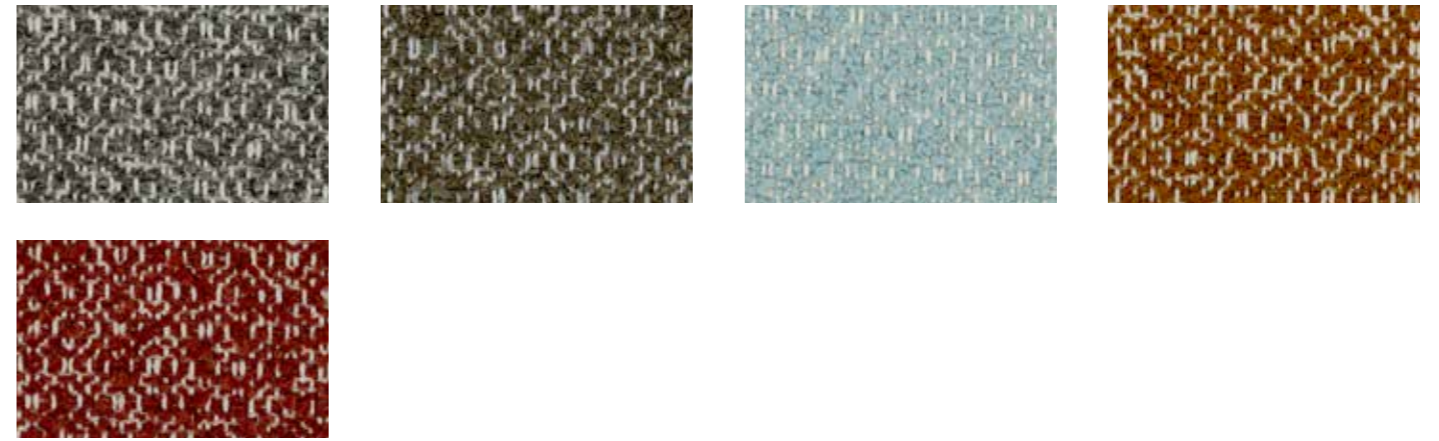
-The main structure of the furniture is constructed using solid stainless steel, specifically AISI 304 or 316, renowned for its high corrosion resistance and durability. This choice of material ensures a sturdy and long-lasting frame for the furniture.

-The cushions, in turn, are elegantly supported by solid bamboo panels.

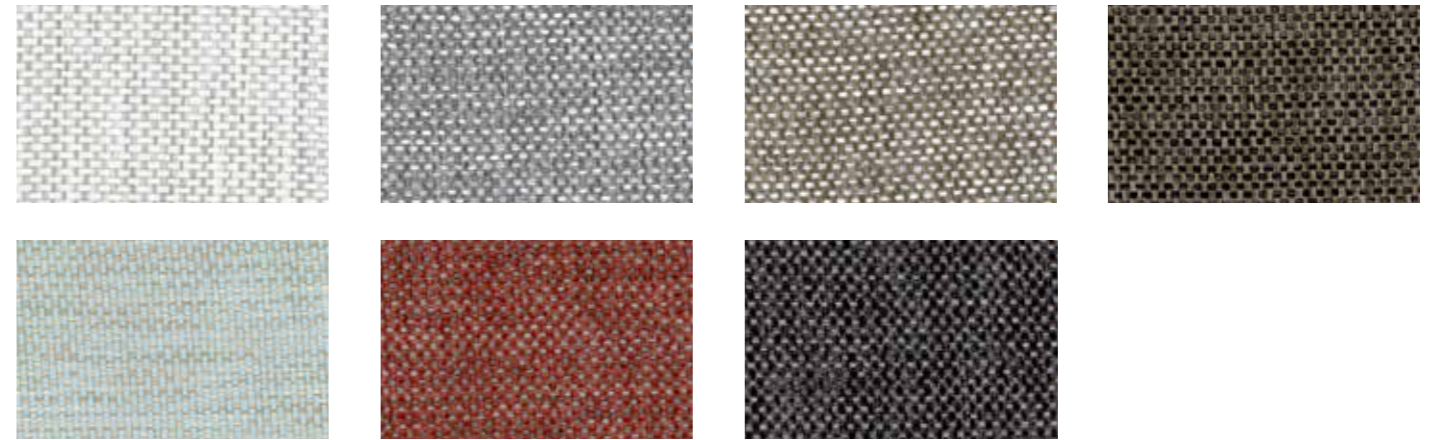
- Seat, back, and armrest cushions are designed for maximum comfort and durability, featuring a removable cover made of polyester fiber and a stress-resistant polyurethane insert. These cushions also include a fixed cover in waterproof polyester, ensuring protection against the elements. The upholstery for the seat, back, and armrest cushions is fully removable.

Textile

KALYSTE



PALOMA



RITZ



SORAYA



Our premium textiles are available in two high-quality options: 100% polyester and 100% polyolefin. The 100% polyester fabric offers exceptional durability, resistance to stretching and shrinking, and enhanced color retention, making it an excellent choice for a variety of applications where longevity and vibrant appearance are essential. The 100% polyolefin fabric, on the other hand, pro-

vides excellent resistance to stains and moisture, as well as impressive durability. This fabric is perfect for environments where heavy use and exposure to the elements are common. Both textile options deliver superior performance and reliability, ensuring that your furniture remains both functional and stylish for years to come.

PLEASE NOTE THAT COLOR SAMPLES PROVIDED ONLINE ARE FOR REFERENCE ONLY AND SHOULD NOT BE CONSIDERED AS EXACT REPRESENTATIONS. IT IS HIGHLY RECOMMENDED TO USE PHYSICAL SAMPLES WHEN PLACING AN ORDER. AS ACCURATE COLOR MATCHING CANNOT BE GUARANTEED THROUGH DIGITAL SCREENS. THE COLOR QUALITY DISPLAYED ON THE WEBSITE MAY VARY DEPENDING ON THE DEVICE USED, RESULTING IN POTENTIAL DIFFERENCES BETWEEN SCREEN REPRESENTATIONS AND ACTUAL COLORS. ADDITIONALLY, TEXTURES MAY BE SHOWN IN A ZOOMED-IN FORMAT TO HELP VISUALIZE MATERIAL DETAILS MORE EFFECTIVELY.

Design_ Valerio Gessate | Graphic concept_ Cinzia Moretto

LUXALTO
OUTDOOR

ALTO ITALY srl

Headquarter: Via Guglielmo Marconi, 39 - 21047 Saronno - (VA) - ITALY

Offices and Production site: Via Meroni Don Luigi, 56 - 22060 Figino Serenza - (CO)

T +39 02 21119501 - info@altoitaly.com ALTO ITALY srl - Tax code and VAT number 03692370129